



FIRST2 NETWORK



Marshall University

Fall 2025



The First2 Network is supported by the U.S. National Science Foundation under Award Numbers: HRD-1834586, WV Higher Education Policy Commission; HRD-1834601, Green Bank Observatory; HRD-1834575, Fairmont State University; HRD-1834595, High Rocks Educational Corporation; HRD-1834569, West Virginia University.

Fall Events



Events and Outreach

- Math Graduate Student Panel
- First Generation Day
- ACS Heritage Farm
- Green and White Day
- Ice Breaker Bingo
- Cookies & Conversation



PDSAs

- Donuts with the Deans
- Campus Clubs
- FAM/ Peer Mentoring
- Research Immersion
- SI (Supplemental Instruction)



Leadership and Team-Building

- Holiday Party (coming soon!)
- Power Skills Course
- CV & Resume Workshop

✨ PDSA ✨

- Donuts with the Dean
 - ◆ Apx 70 students participated
 - ◆ College of Science Deans; Dr. Stites and Dr. Mummert
 - ◆ Some of the Chairs joined: Chemistry
 - ◆ Some faculty stopped by: Biology, Geology, Chemistry
 - ◆ Something New: Thank you note cards!
 - ◆ Student Government Association helped



✨ PDSA ✨

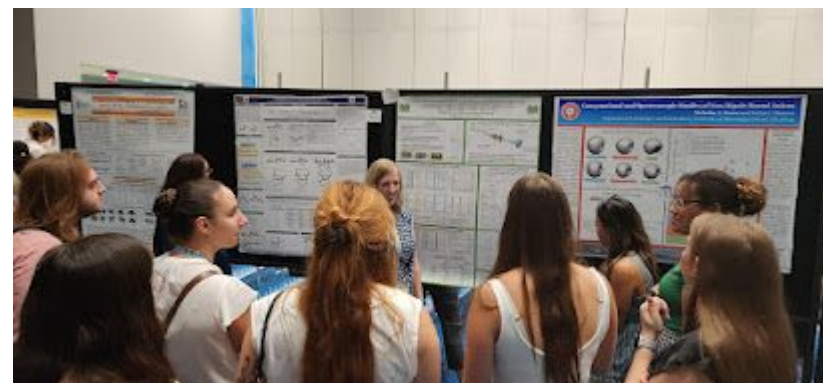
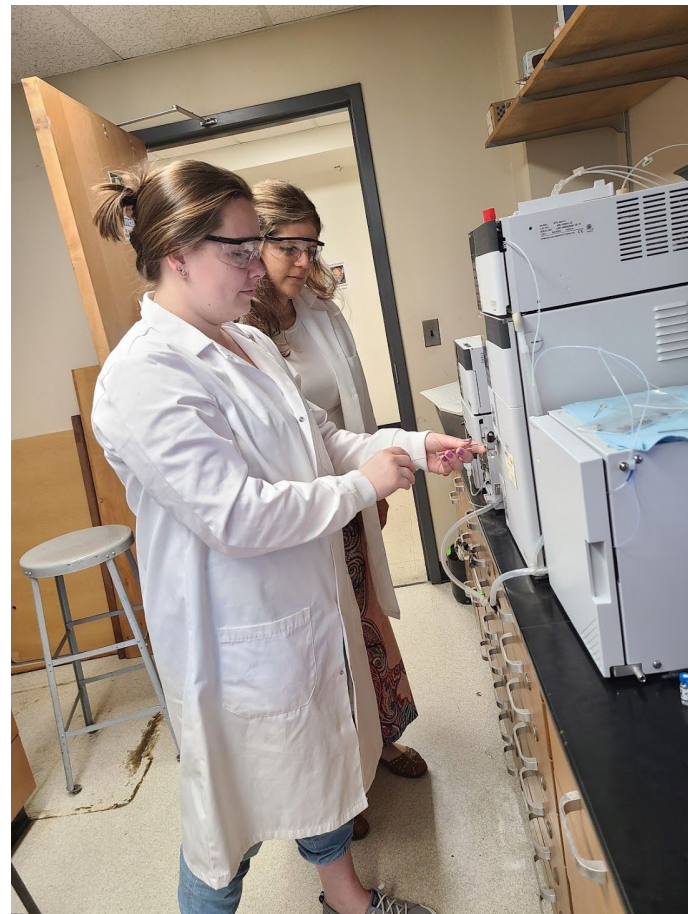
- Campus Club
 - ◆ Apx 8-10 students participated
 - ◆ Helping organizing events
 - ◆ Giving feedback about activities
 - ◆ Speakers, outreach, and recruiting to MU



✨ PDSA ✨

→ Research Immersion

- ◆ 6 faculty in COS having students doing research
- ◆ 7 campus club students doing some kind of research
- ◆ We encourage WV capitol day abstract submission
- ◆ Chemistry majors can present in national meetings



✨ PDSA ✨

- SI consists of regularly scheduled, voluntary, out-of-class group study sessions driven by students' needs
- Statistically help students earn better grades
- Supplemental Instruction
 - ◆ Chemistry for Nursing
 - ◆ Organic Chemistry
 - ◆ General Chemistry
 - ◆ Algebra
 - ◆ Calculus



PLANS FOR THE FUTURE

Sustainability

- Participating in some NSF grant submissions
- Be part of the MU clubs budget

Communication

- Emails with COS for events
- Teams meeting
- GroupMe

Organizational Structures

- Delegation through club positions (treasurer, social media manager, & graphic designer)
- Shared documents and planning

🌟 Future Event 🌟

- Science Fair Judging
- Suture Clinic
- Forensic Speaker
- Holiday event
- Green and White Day
- Movie Night
- Icebreaker Bingo as PDSA
- Career workshop

✨ **Special Thank You for Support** ✨

- **Dr. Kateryna Schray** - Director, Center for Student Success
- **Morgan Conley** - Assistant Director, Student Success Initiative • Center for Student Success
- **Dr. Anna Mummert** - COS Associate Dean
- **Jay Rader** - Student Support
- **Dr. Sachiko McBride** - Physics Dept.
- **Stephanie Blankenship** - COS Communication

Contact Us!

Faculty Advisor: Dr. Rosalynn Quiñones (quinonesr@marshall.edu)

Lead Student Director: Nevaeh Ellington (ellington6@marshall.edu)