

## 2023-2024 PDSAs

1. Creation of Shepherd First 2 Club
2. Institutional Onboarding Session (IOS)
3. Creation of Shepherd STEM Success Center (SSSC)

## 2024-2025 PLANNED PDSAs

1. First 2 Club
2. Further development of SSSC
3. Faculty coffee chats
4. Expansion of Career Preparedness Series
5. Physics & math anxiety help
6. Organic chemistry optional study sessions

## PDSA PROCESS

PDSAs are very complex but benefit the team by thinking through the entire process as to what you are doing and why. They also create accountability with the need to close the loop on the research.

## PDSA COACHING EXPERIENCE

The coaches are indispensable. They guide you while learning the whole PDSA process and then to taking the project to the next level.

They also ensure that the PDSA projects are something that is "useful" to First2.

## SUMMARY

Shepherd had approximately 5 weeks to work on First2 Network materials after the initial application process and on-boarding session. We did not make it through a full PDSA cycle yet but have three in-progress. Issues that have been encountered have included an intense PDSA process, working with our IRB which typically only works with student research projects, and working with the admin to plan out the renovation of an existing computer lab for the SSSC.

We plan on having as many of the Fall 2024 PDSAs ready to go at the start of the academic year when the IRB will next meet.

## HIGH LEVEL FINDINGS

We do not have a completed PDSA to highlight.

Below is attendance information for students at First2 Club events.

Event	Attendance
IOS	20-30
Final exam prep session	25-30
Final exam study session 1	25-30
Final exam study session 2	35-40

## PHOTO HIGHLIGHTS

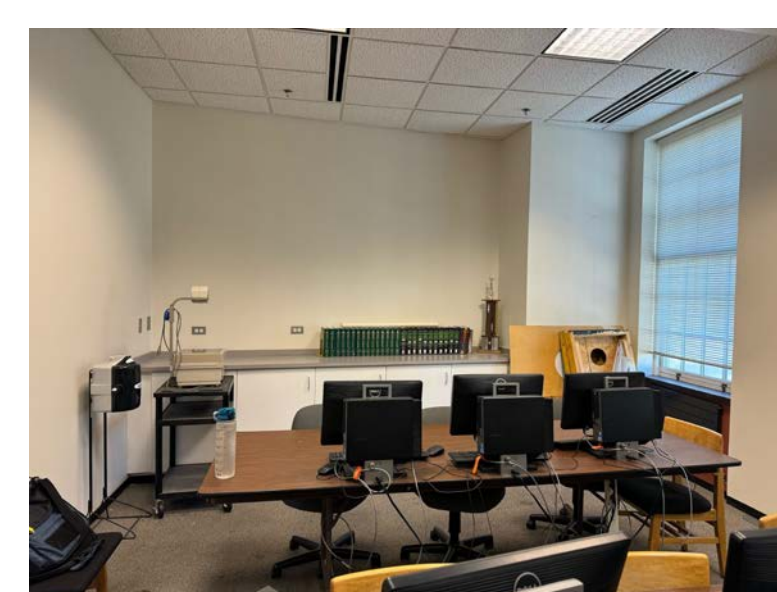
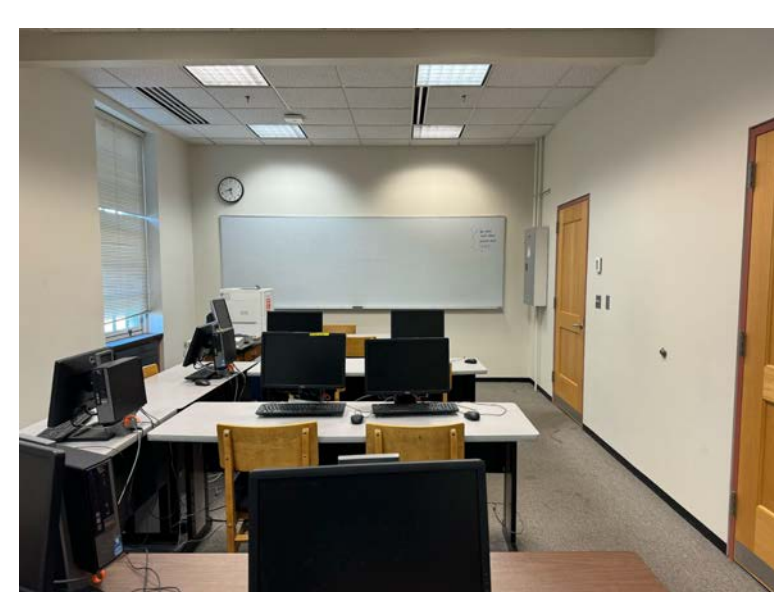
### Institutional Onboarding with First2



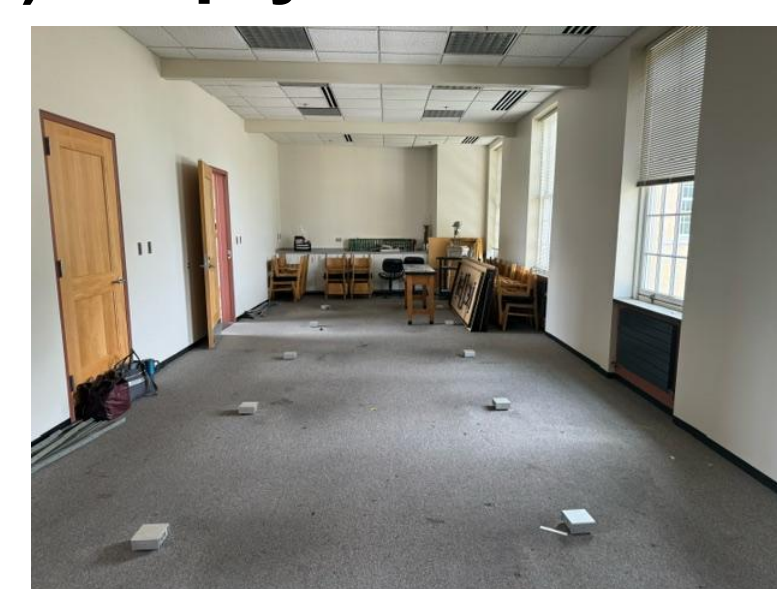
### Jacob Doyle Presenting at the IOS



### The SSSC Originally



### The SSSC (Mostly) Empty



## DATA

### Fall 2023 Institutional Statistics

	STEM	Shepherd
All Students	378	2376
URM	81 (21.4%)	559 (23.5%)
First-gen	293 (77.5%)	1903 (80.1%)
Low-income	151 (39.9%)	1120 (47.1%)

### Preliminary SSSC Student Survey Results

112 total student responses

- 34% Bio, 19% ENVIS, 17% Chem, 8% Bio Chem
- 19% part of First2, 52% heard of First2

Top Desires	Interest
Electrical outlets	92%
Additional white boards	82%
Printer	81%
Desks	69%
Conference table	64%

## DISCUSSION & CONCLUSION

Joining First2 has had an immediate effect at Shepherd.

We've already started and completed initiatives that benefit our students, including final exam assistance and a Student Success Center.

We also expanded our team to include a faculty member from the Computer, Math and Engineering department and two members from TRiO. We plan on expanding our student leaders in the upcoming year.

Our biggest hurdles have been the short amount of time we've been part of First2 and our IRB process.

## TIPS FOR OTHER INSTITUTIONAL TEAMS

PDSAs are more involved than they initially appear. It would be most helpful to sit down and write one with a coach before trying to do it on your own.

Start early - you may have the plan but working with the administration and IRB can quickly derail efforts.