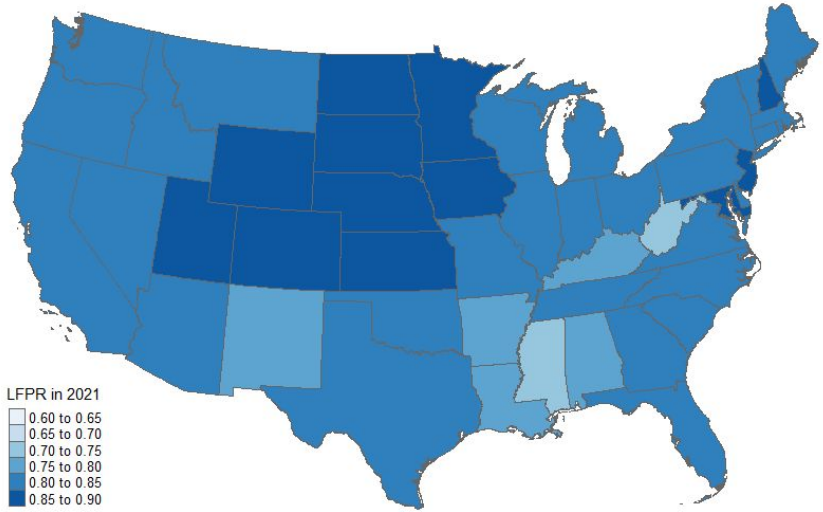




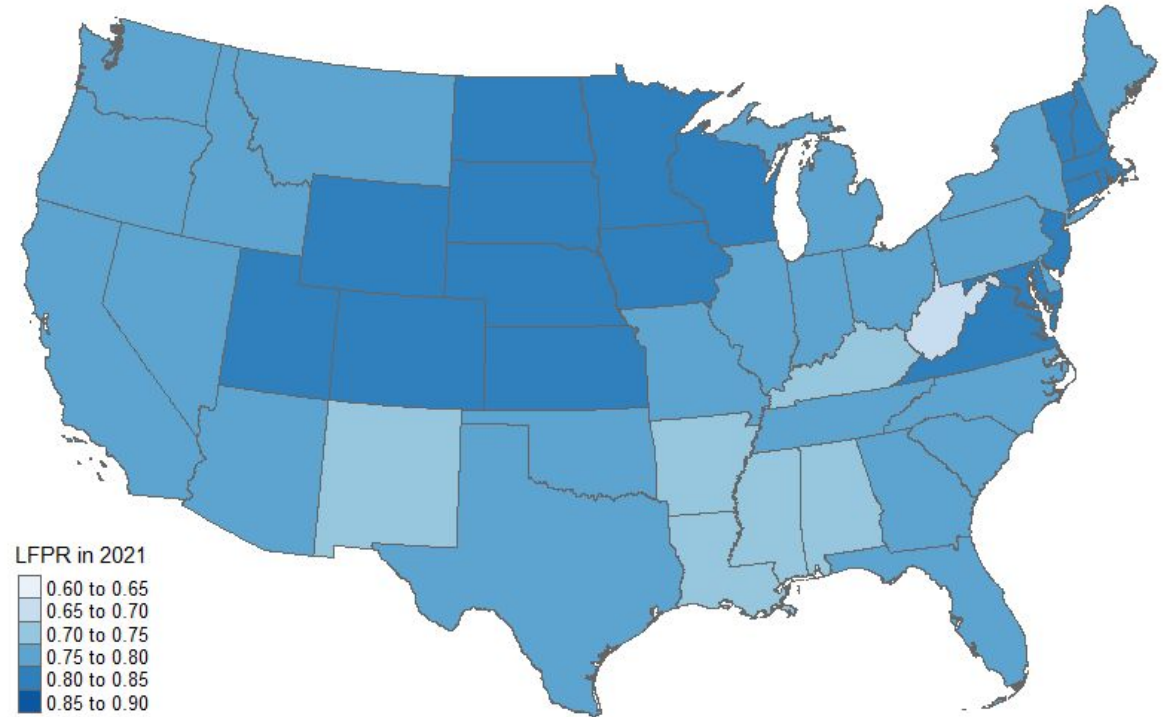
# Labor Force Participation in West Virginia

Heather M. Stephens, Ph.D.  
Director, Regional Research Institute (RRI)  
West Virginia University

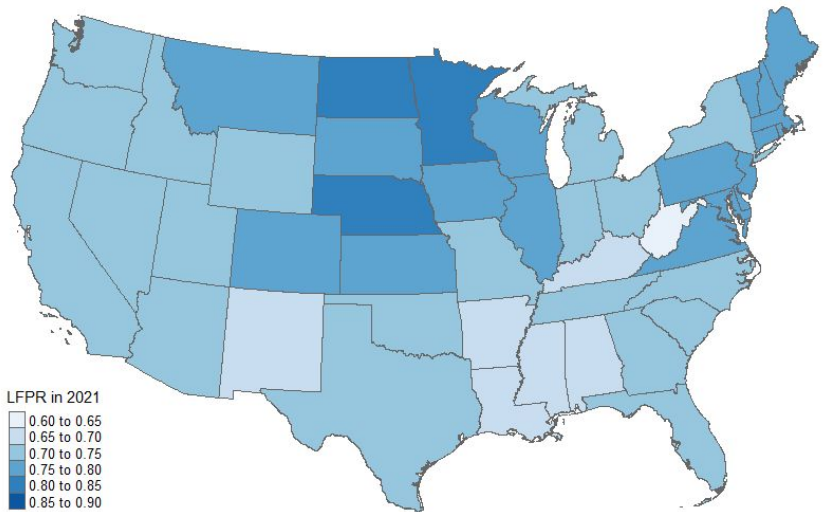
Male LFPR, 2021



Overall LFPR, 2021



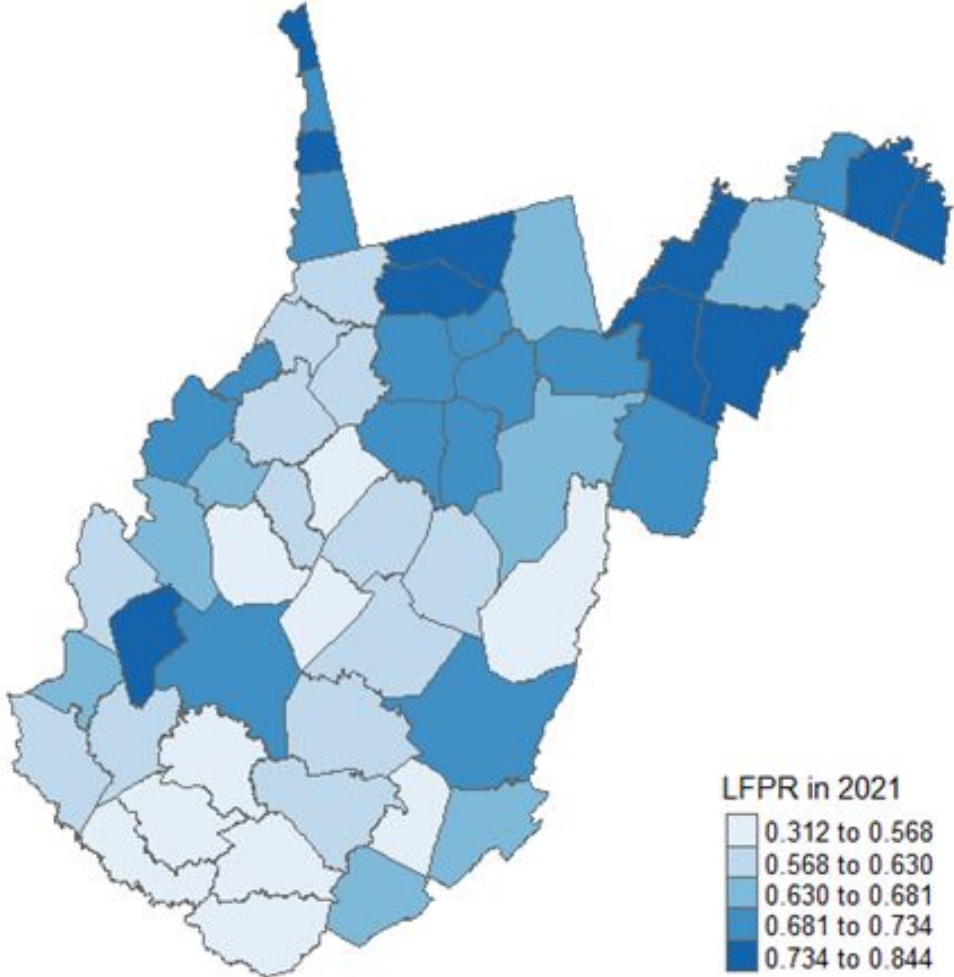
Female LFPR, 2021



Note: Labor Force Participation Rate for men and women ages 20-64. Data is obtained from U.S. Department of Labor, Women's Bureau.

<https://www.dol.gov/agencies/wb/data/lfp-rate-sex-state-county>

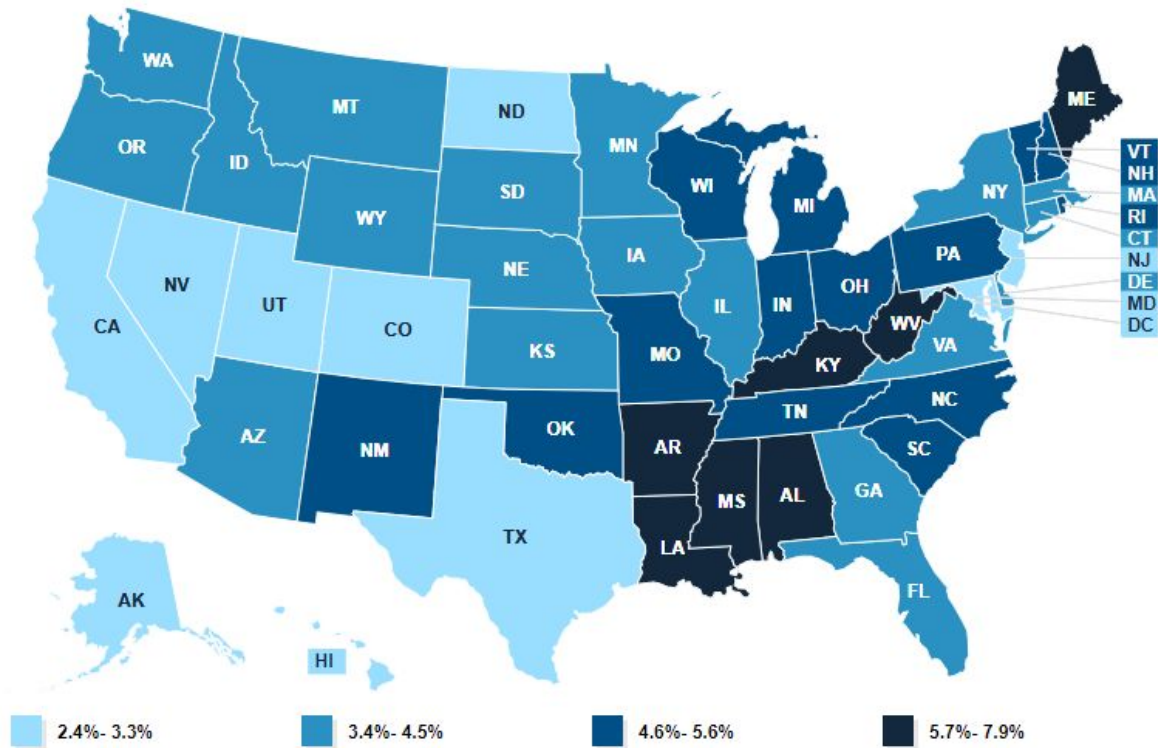
# Overall LFPR in West Virginia, 2021



Note: Labor Force Participation Rate for men and women ages 20-64. Data is obtained from the U.S. Department of Labor, Women's Bureau.

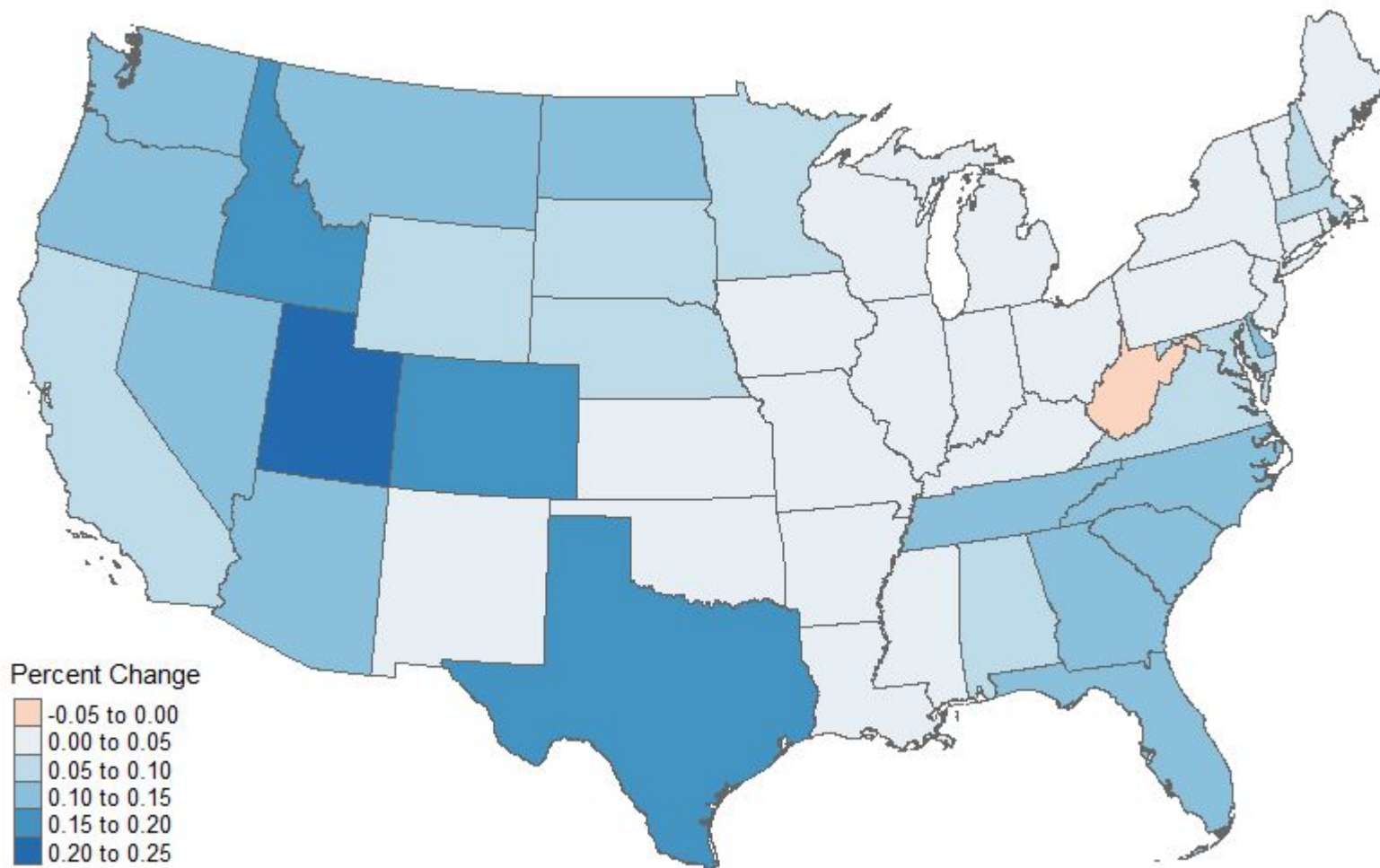
# KFF Total Disabled Social Security Disability Insurance (SSDI) Beneficiaries, Ages 18-64 | KFF

Timeframe: 2021

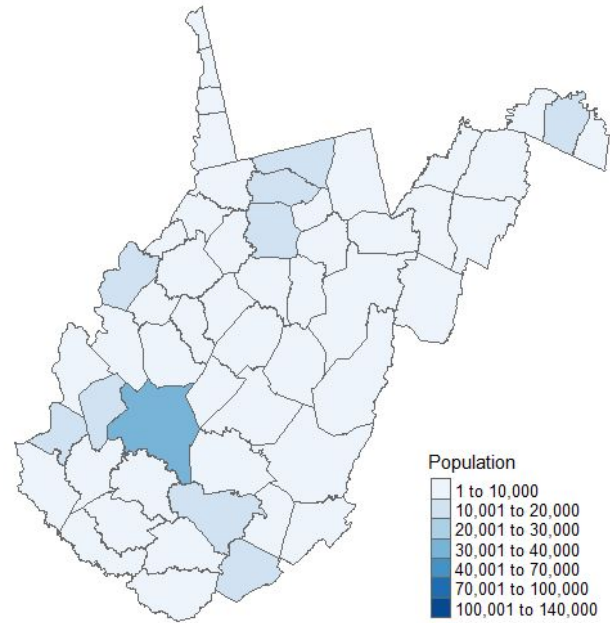


Source: Social Security Administration, [Annual Statistical Report on the Social Security Disability Insurance Program](#)

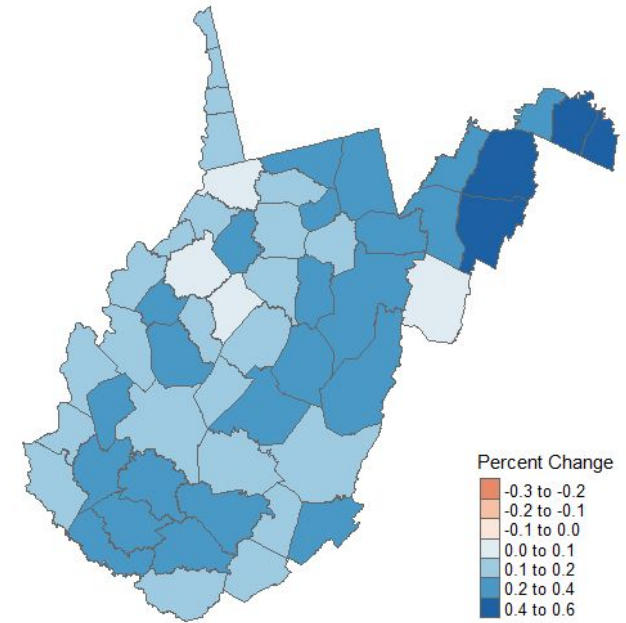
## Percent Change of Population over 18, 2010-2021



Population over 65, 2021

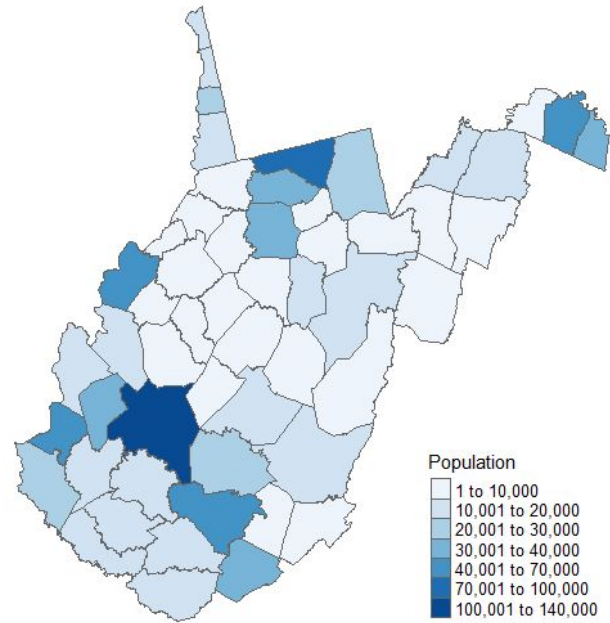


Percent Change of Population over 65

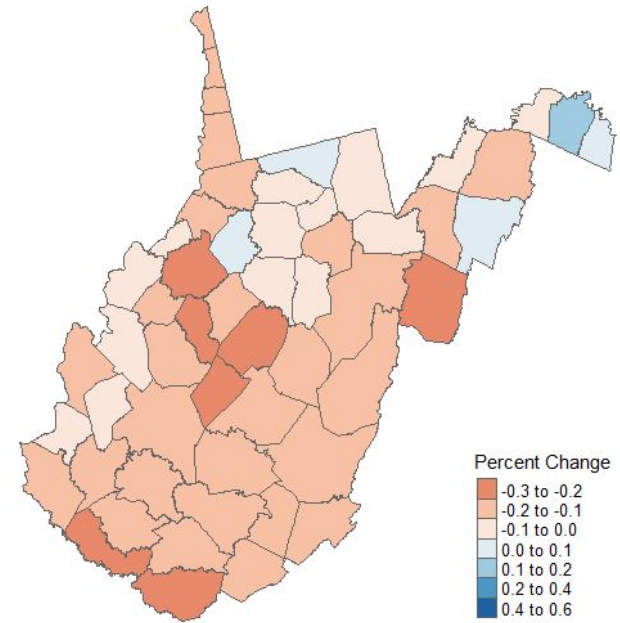


Note: Figure shows the percentage change in the population over 65 from 2010 to 2021.

Population 18-64, 2021

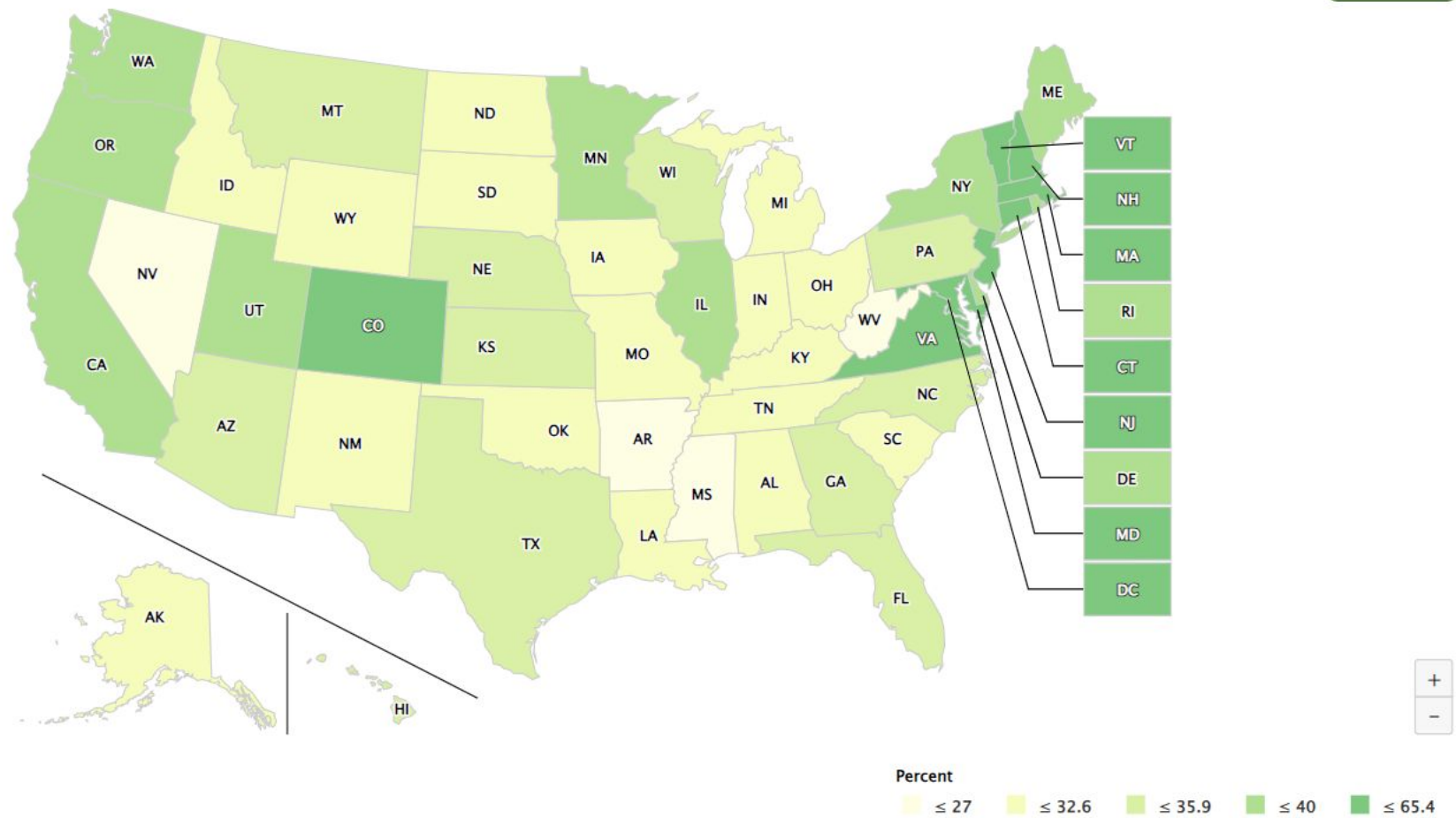


Percent Change of Population 18-64



Note: Figure shows the percentage change in the population aged 18-64 from 2010 to 2021.

[VIEW GRAPH](#)



Source: U.S. Census Bureau

Source: St. Louis Fed/U.S. Census Bureau